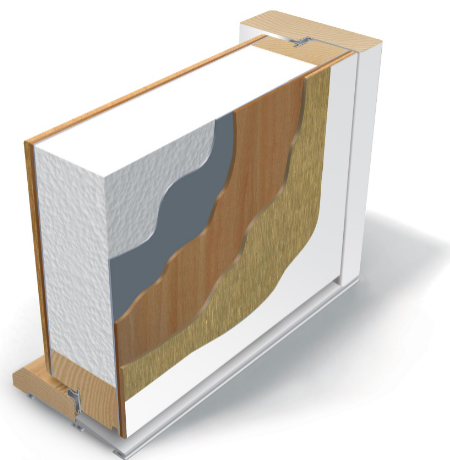


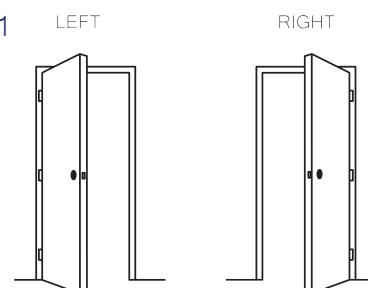
Outward opening laminated external door with 1-sealing and thermo content.



Water tightness	Class 7B
Air permeability	Class 4
Resistance to wind load	Class C3
Thermal transmittance	0.67 W/m ² K without glass 0.92–0.74 W/m ² K with glass

TECHNICAL DATA

Size	one sided M9-10 x M20-21 can be produced as a double-sided
Door leaf	thickness 81 mm
Frame	pine, depth 105mm
Threshold	oak-aluminium, height 25mm
Locking system	lock case ASSA 565 and striking plate 1889-11
Hinges	plate hinges 3248
Finishing	white (S 0502-Y), special colour
Glass	clear, crepi, cotswold or satinovo
Extras	locks from different manufacturers, stainless steel kick plate, door closer, door eye, doorbell



It is possible to get special solutions. More information from the representative.



	H	B	W	A	A1	A2
M9			890	825	802	721
M10			990	925	902	821
M20	1989	1940				
M21	2089	2040				

FB06

