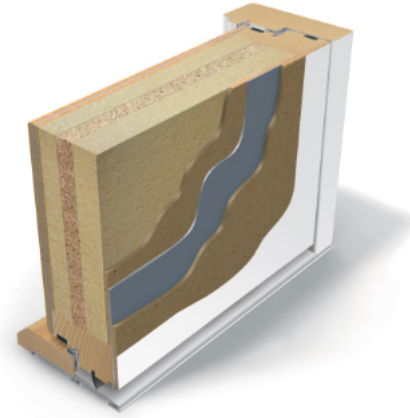


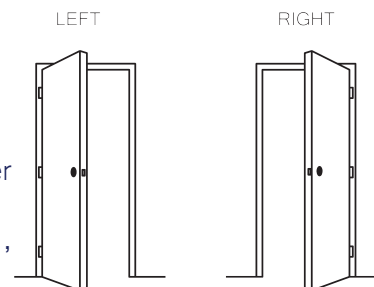
Outward opening fire resistant external door with 2-sealing.

Fire resistance	EI30
Sound insulation	Rw38-41dB
Water tightness	7B
Air permeability	Class 4
Thermal transmittance	0,84 W/m <sup>2</sup> K without glass 1,31-0,95 W/m <sup>2</sup> K with glass



## TECHNICAL DATA

Size	M9-10 x M20-21, max 11x22
Door leaf	thickness 78mm
Frame	pine, depth 105mm
Threshold	oak-aluminium, height 25mm
Locking system	lock case ASSA 410 or 310, striking plate 1487-2
Hinges	plate hinges Abloy 110-36KSS
Finishing	white (S 0502-Y), special colour or teak veneer
Extras	locks from different manufacturers, extra lock 411, stainless steel klick plate, door closer, door eye, grooved pattern, glued decorativepanels and/or moldings, glass



It is possible to get special solutions. More information from the representative.



	H	B	W	A	A1	A2
M9			890	825	782	714
M10			990	925	885	814
M20	1989	1940				
M21	2089	2040				

EC04

