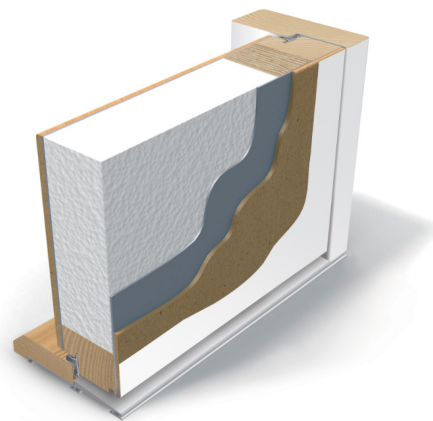


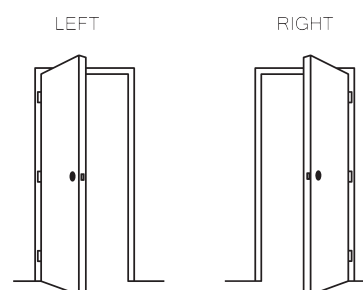
Outward opening external door with 1-sealing and security classification.

Sound insulation	Rw 26-28dB
Water tightness	Class 7B
Air permeability	Class 4
Resistance to wind load	Class C3
Thermal transmittance	0.77 W/m ² K without glass 1.0 W/m ² K with glass



TECHNICAL DATA

Size	one sided M9-10 x M20-21
Door leaf	thickness 62mm
Frame	pine, depth 105mm
Threshold	oak-aluminium, height 25mm
Locking system	lock case ASSA 410 or ASSA 2002. Striking plate 1487-2HD (metal safety plate on the back of the frame)
Hinges	plate hinges 3248-110 TMKSS (metal safety plate on the back of the frame)
Finishing	white (S 0502-Y), special colour or teak veneer
Glass	laminated clear, diamante, cotzwold or satinovo
Extras	stainless steel kick plate, door eye, doorbell, glued decorative panels and / or moldings



ED01

It is possible to get special solutions. More information from the representative.



	H	B	W	A	A1	A2
M9			890	825	802	740
M10			990	925	902	840
M20	1989	1940				
M21	2089	2040				

ED01

