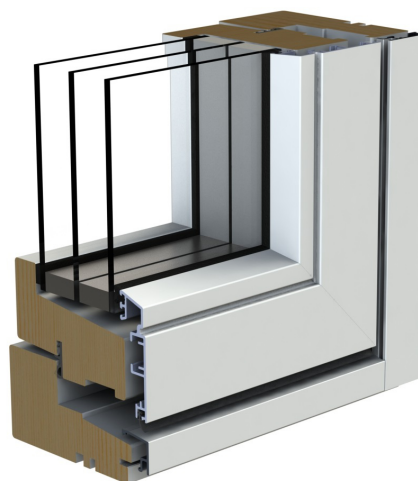




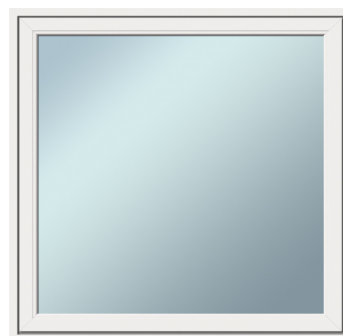
Outward opening single frame wooden-aluminium window.

Water tightness	Class 9A
Sound insulation	Rw32-45dB
Air permeability	Class 4
Resistance to wind load	Class C4
Thermal transmittance	0,79-0,75 W/m²K



## TECHNICAL DATA

Size	480-1580 x 580-1580mm
Construction	single frame
Opening	projecting top hung
Frame	pine, depth 106mm
Glass	triple-glazed, thickness 57mm
Fittings	ASSA allswing
Handle	Hoppe
Finishing	wood white (S 0502-Y), special colour, unfinished or stained. Aluminium tone RAL9010 or according to colour card
Extras	removable or between glass bars, blinds, ventilation valve



FF05

It is possible to get special solutions. More information from the representative.

[vau.ee](http://vau.ee)

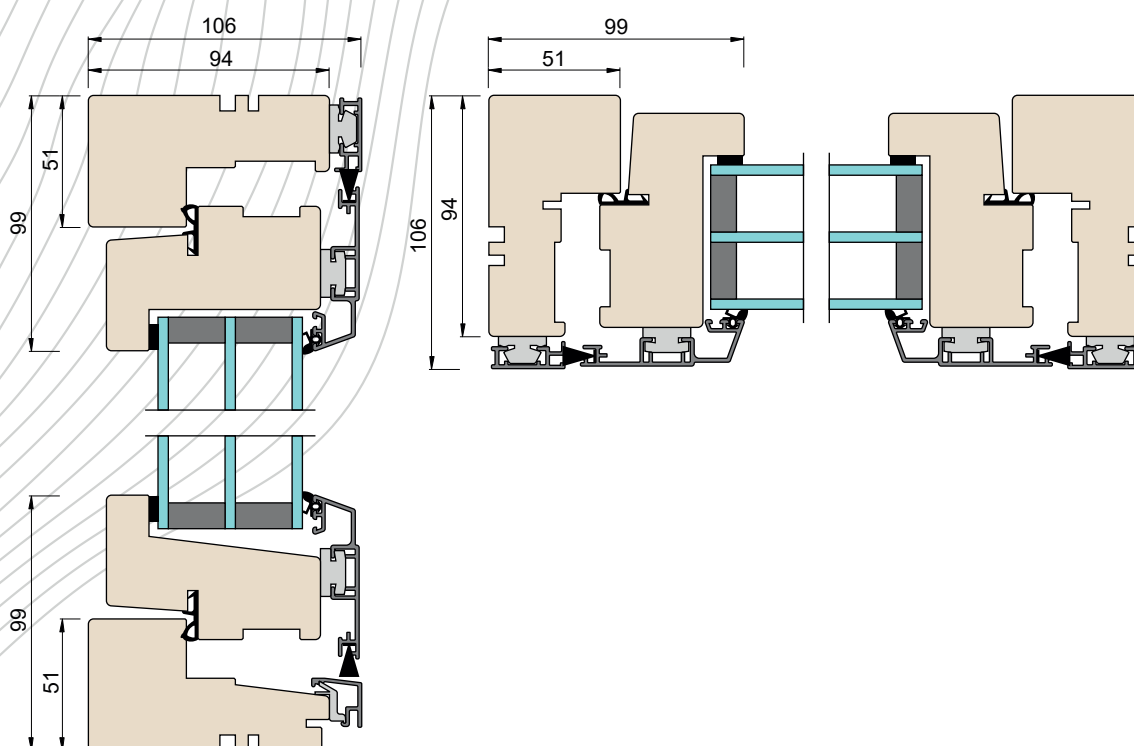


TSAAL

	M5	M6	M7	M8	M9	M10	M11	M12	M13	M14	M15	M16
M6												
M7												
M8												
M9												
M10												
M11												
M12												
M13												
M14												
M15												
M16												

min/max width x height

- difficulties with opening
- recommended size range



FE05